

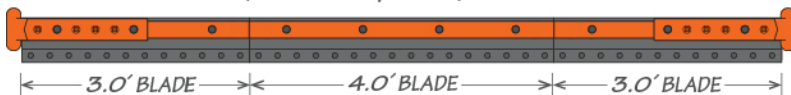


## INSTALLATION INSTRUCTIONS

# Sno-Shock® Cutting Edge System

### PARTS INCLUDED

SNO-SHOCK® BLADE (10.0' Set-up shown)

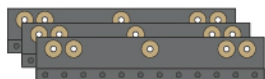


Blade widths available to fit 10.0', 11.0', 12.0' plow

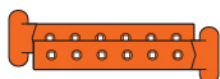
3.0' BLADE



4.0' BLADE



3' OR 4' SNO-SHOCK®  
BLADE SECTIONS



UNIVERSAL® CURBRUNNERS  
(Left and Right)



SNO-SHOCK® STRAPS  
(Left and Right)



PLOW BOLT KIT  
INCLUDED

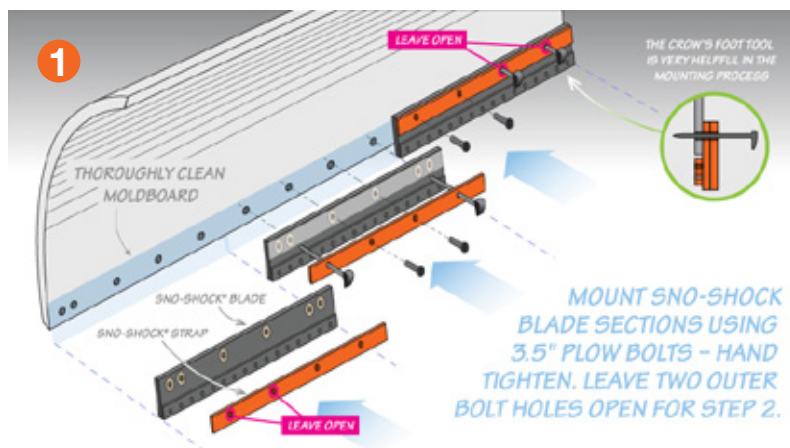
### IMPORTANT!

The moldboard mounting surface must be clean of all foreign material prior to installing new blades and hardware to avoid issues with bolt loosening while in service.

- ◆ For torque recommendation, please refer to SAE J1701
- ◆ Re-torque hardware after the first 10 plow hours

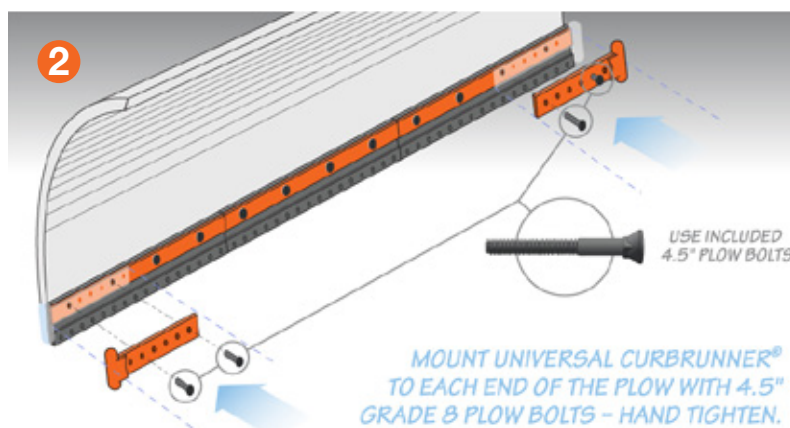
### Step 1

Clear moldboard of all foreign material before mounting Sno-Shock® blade sections and Sno-Shock® straps with the 3.5" Grade 8 plow bolts. Hand tighten. Leave the outside bolt holes empty for Step 2.



### Step 2

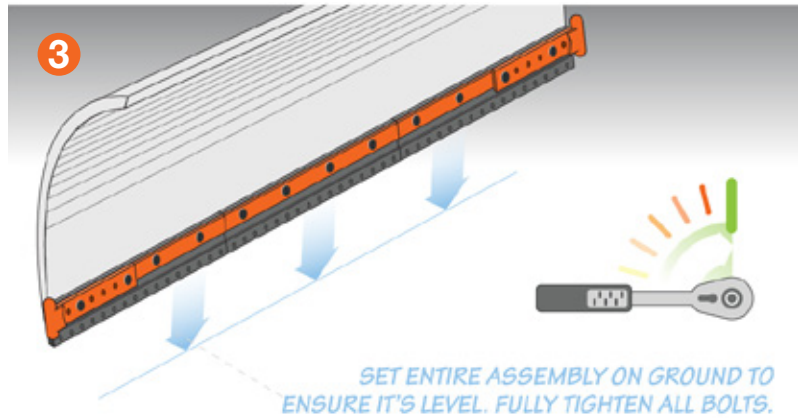
Install drivers- and passengers-side Universal CurbRunner® curb guards with the 4.5" Grade 8 plow bolts. Hand tighten.



### Step 3

Set entire assembly on ground to ensure it's level.

Fully tighten all bolts. For torque specification, please refer to SAE J1701.



Re-torque hardware after the first 10 plow hours