

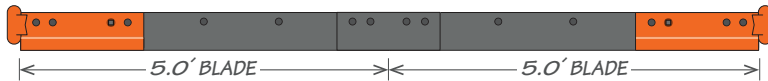
**WINTER**

## INSTALLATION INSTRUCTIONS

# Common Sense<sup>®</sup> HD Cutting Edge System

### PARTS INCLUDED

COMMON SENSE<sup>®</sup> HD BLADE (10.0' Set-up shown)



Blade widths available to fit 10.0', 11.0', 12.0' plows

5.0' BLADE

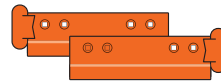
6.0' BLADE



5' OR 6' BLADE SECTIONS



FLOWGUARD CURBCAST<sup>™</sup>  
(Left and Right)



FLOWGUARD CURBRUNNER<sup>™</sup>  
(Left and Right)



COVER PLATE



FLOW BOLT KIT  
INCLUDED

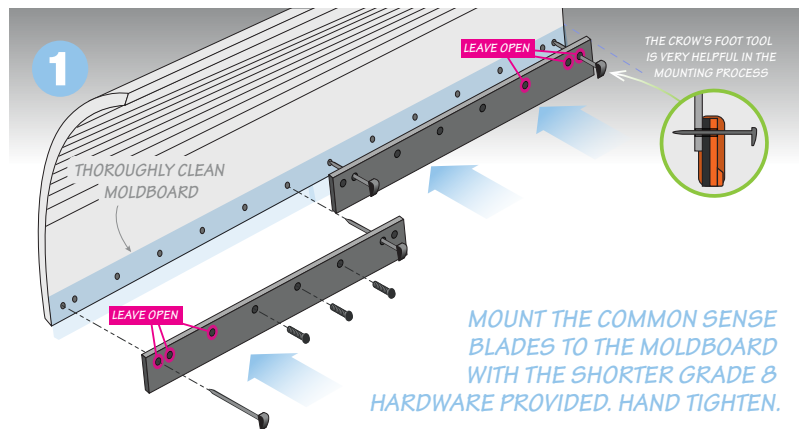
### IMPORTANT!

The moldboard mounting surface must be clean of all foreign material prior to installing new blades and hardware to avoid issues with bolt loosening while in service.

- ◆ For torque recommendation, please refer to SAE J1701
- ◆ Re-torque hardware after the first 10 plow hours

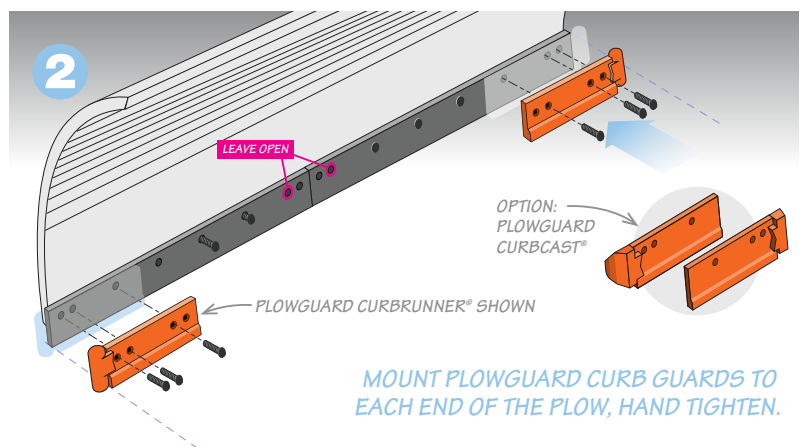
### Step 1

Clear moldboard of all foreign material before mounting Common Sense<sup>®</sup> blade sections with the 3" Grade 8 plow bolts in the provided mounting hardware kit. Hand tighten. Leave the outside bolt holes empty for Step 2.



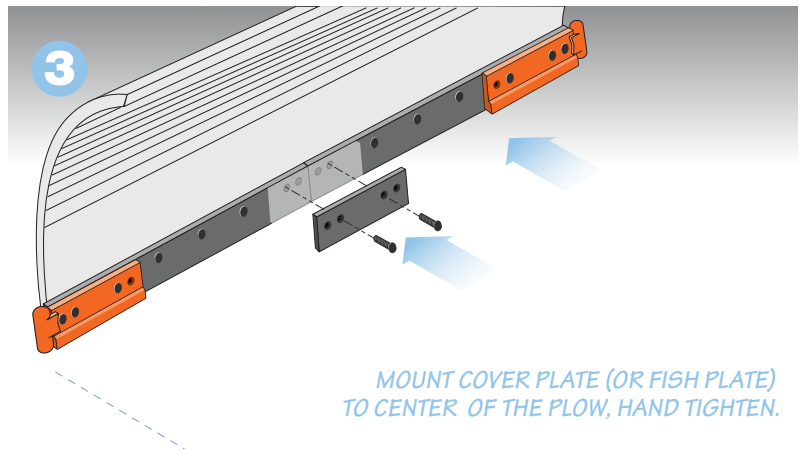
### Step 2

Install drivers- and passengers-side PlowGuard CurbRunner<sup>®</sup> or PlowGuard CurbCast<sup>®</sup> curb guards with the 3.5" Grade 8 plow bolts. Hand tighten. Leave the four bolt holes in the center of the plow – where the left and right blades meet – empty for Step 3.



### Step 3

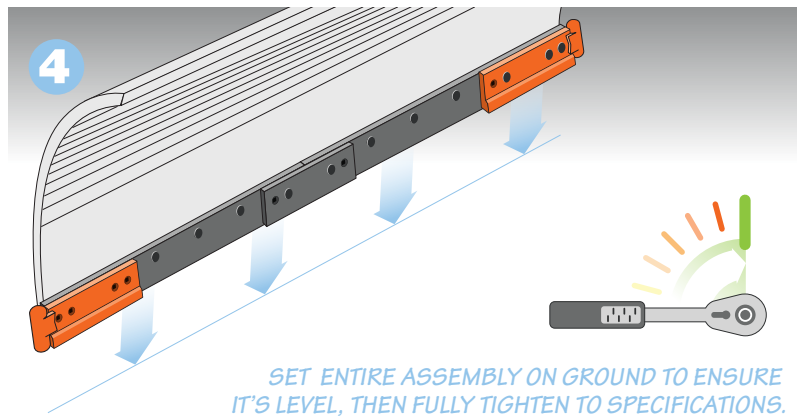
Install the Cover Plate in the center where the blades meet with 3.5" Grade 8 plow bolts included. Hand tighten.



### Step 4

Set entire assembly on ground to ensure it's level.

Fully tighten all bolts. For torque specification, please refer to SAE J1701.



Re-torque hardware after the first 10 plow hours