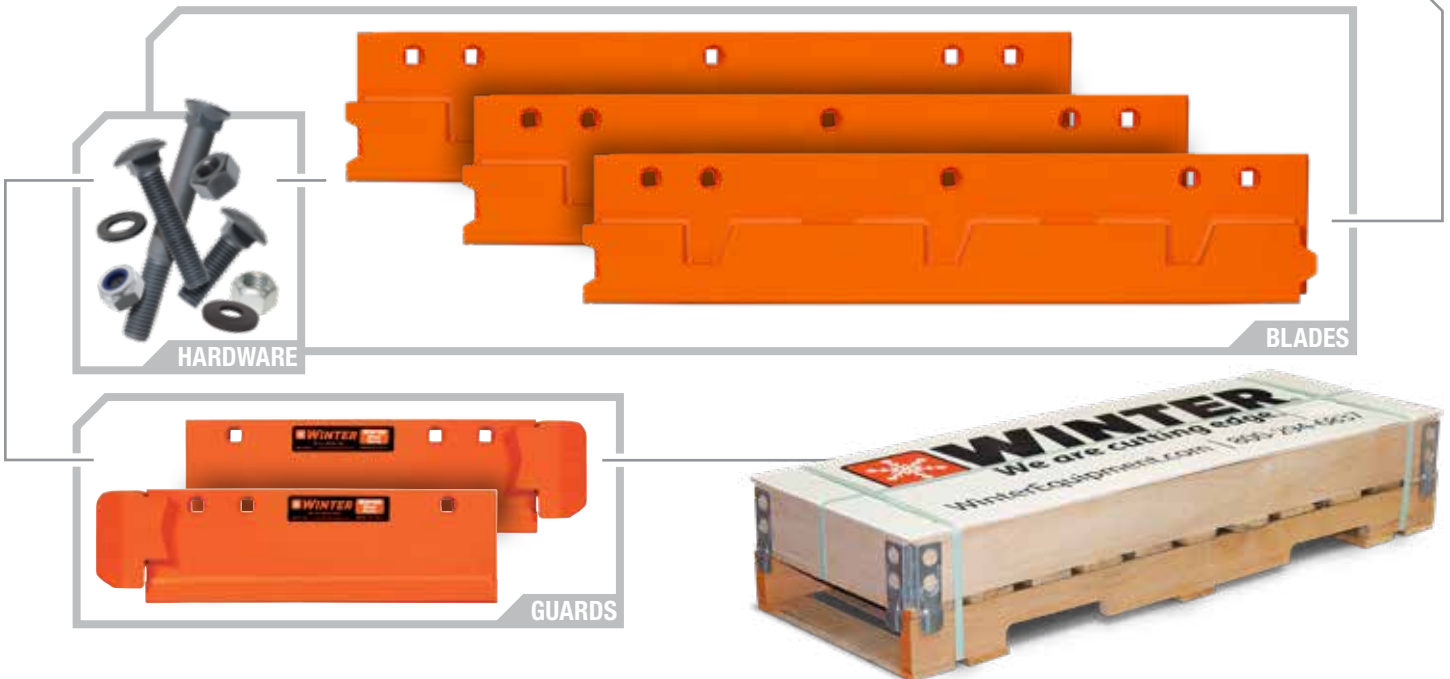


# Razor® XL

## Complete Solution Everything Included



### Razor® XL Carbide Cutting Edge System

#### Why Choose the Complete System

- **Save Time & Money** - Lasts **3x** longer than standard carbide & cover blades
- **Perfect Setup Every Time** - Integrated design eliminates configuration guesswork
- **Maximum Protection** - Wide footprint prevents damage to bridge joints and equipment
- **Superior Clearing Power** - Aggressive cutting through hard-packed snow and ice
- **Everything Included** - Three blade sections, two PlowGuards, and Grade 8 hardware
- **Engineered for Speed** - Ideal for highways and high-speed applications

PART NUMBER	DESCRIPTION	SIZE
SYS-RZXL10F	Razor® XL w/ 2 PlowGuard Straight	10'
SYS-RZXL10FP	Razor® XL w/ 2 PlowGuard CurbCast	10'
SYS-RZXL11F	Razor® XL w/ 2 PlowGuard Straight	11'
SYS-RZXL11FP	Razor® XL w/ 2 PlowGuard CurbCast	11'
SYS-RZXL12F	Razor® XL w/ 2 PlowGuard Straight	12'
SYS-RZXL12FP	Razor® XL w/ 2 PlowGuard CurbCast	12'

**Call 888.294.2975 for additional sizes and guard configurations.**

**SCAN TO  
REQUEST  
A QUOTE**

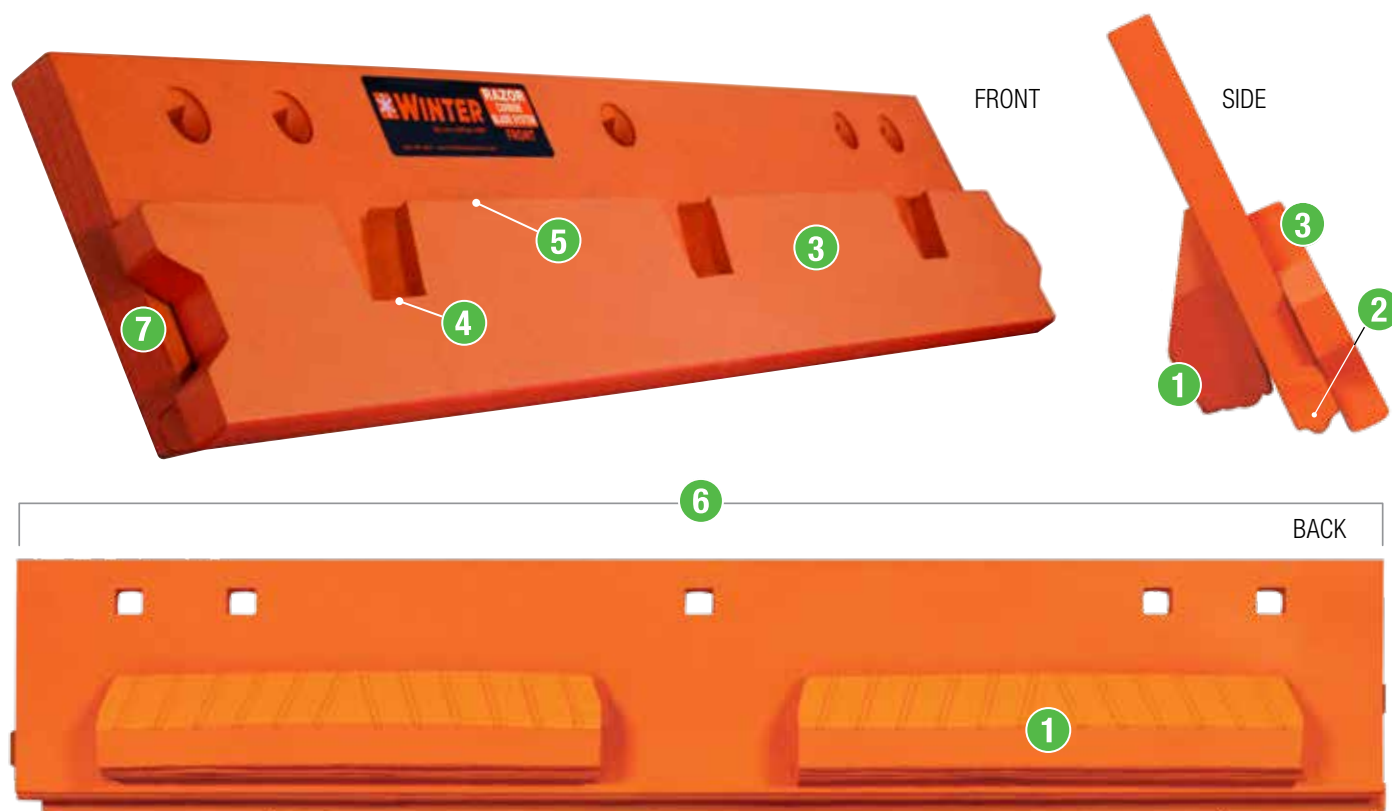


Your Winter Equipment Specialist:

**844.294.7894**

**[WinterEquipment.com](http://WinterEquipment.com)**

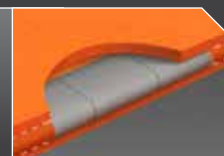




- 1 Integrated cast steel wear shoe filled with Winter Carbide™, welded to the back of the blade
- 2 Taller 3/4" HammerHead® Shape Carbide Inserts
- 3 Integrated AR500 Steel Cover Blade
- 4 Carbide Wear Indicators
- 5 Moldboard Damage Wear Indicators
- 6 3 – 4 ft Blade Segments
- 7 Interlocking Tabs

#### HAMMERHEAD CARBIDE

30% more carbide & round bottom for improved surface contact at any attack angle



## Razor® XL Carbide Blade

### Premium carbide blade for high-speed highway clearing

Razor® XL is a high-performance blade engineered for state DOTs and counties who need maximum uptime on highways and high-speed routes. This premium system features taller 3/4" HammerHead® carbide inserts with a rounded bullnose shape that cuts from multiple angles, plus integrated wear shoes filled with Winter Carbide™ that eliminate the need for separate moldboard shoes.

*"We used to change our carbide and cover every 24 hours. Our Razor XL has lasted 5-6 times as long as our old carbide and cover cutting edges."*

D Hinton, Maintenance Foreman, Wyoming DOT

### Built for Maximum Performance:

- > **3/4" HammerHead® Carbide Inserts** - 30% more carbide than standard designs for longer life
- > **Integrated Wear Shoes** - Cast steel filled with Winter Carbide™ welded to the blade back
- > **Integrated AR500 Steel Cover** - Perfectly positioned to prevent carbide impact damage
- > **Wear Indicators** - Show when carbide is used up and prevent moldboard damage