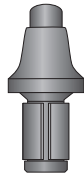


GRAVEL ROAD MAINTENANCE SYSTEMS

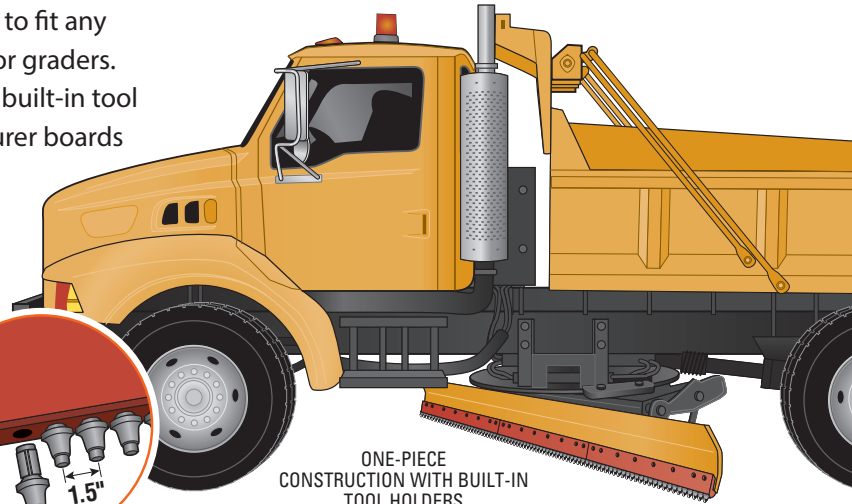
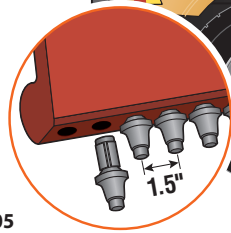
System 2500 and System 2000 Blades

The System 2500 has a beveled design that is engineered to fit any underbody plow. The System 2000 is engineered for motor graders. Both are quality built, one-piece board construction with built-in tool holders. This is an advantage over competitive manufacturer boards that have weld-on holders that can break away from the board, requiring replacement. Our steel boards are thru hardened for extended wear. Both have 1-1/2" center-to-center tool spacing, and are available in 3' and 4' lengths. A variety of carbide tipped tools are available for year 'round road maintenance projects.

Contact our road maintenance specialists for demo information and references.
Pricing available on request.



Part# MT 10105



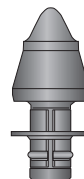
ONE-PIECE
CONSTRUCTION WITH BUILT-IN
TOOL HOLDERS

*Products of Sandvik Mining and Construction

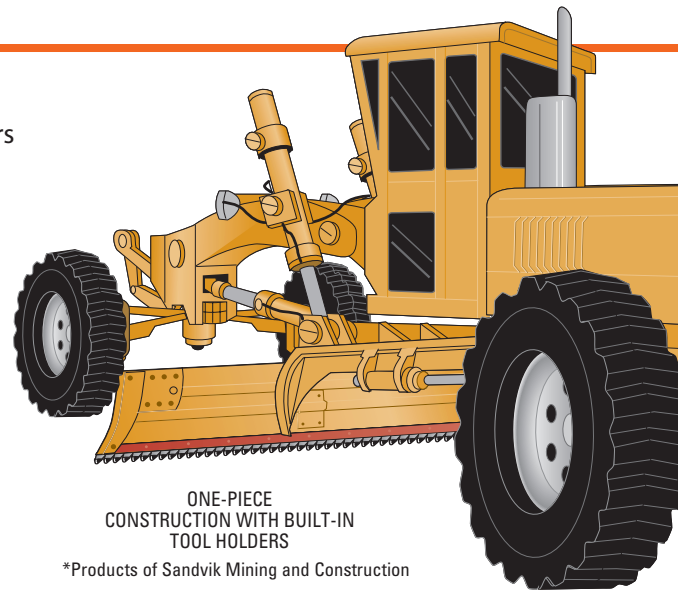
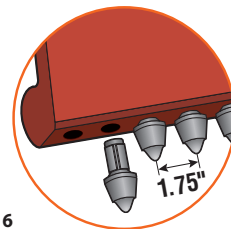
System 2100 Heavy-Duty Grader Blades

The System 2100 is engineered to fit any motor grader plow. It is a quality built, one-piece steel board construction with built-in tool holders that is thru hardened for extended wear. This is an advantage over competitive manufacturer boards that have weld-on holders that can break away from the board, requiring replacement. The board design has 1-3/4" center-to-center spacing for heavy-duty tools, and is available in 3' and 4' lengths. Several carbide tipped tools are available for year 'round road maintenance projects, as well as wintertime ice removal.

Contact our road maintenance specialists for demo information and references.
Pricing available on request.



Part# MT 50116



ONE-PIECE
CONSTRUCTION WITH BUILT-IN
TOOL HOLDERS

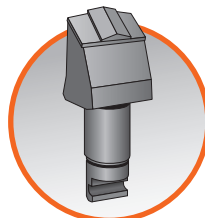
*Products of Sandvik Mining and Construction

HEAVY-DUTY REPLACEMENT PARTS FOR COMPETITIVE SYSTEMS

Winter® Equipment now has available replacement tools and holders for competitors' scarifier systems. For availability, contact our road maintenance specialists for detailed information. Pricing available on request.



TOOL HOLDER
PART# MT 10356



MILLING TOOL
PART# MT 10114

 **WINTER**
We are cutting edge.
winterequipment.com
800-294-6837