

# PRO-TECH® MODULAR SHOE SYSTEM

## INSTALLATION GUIDE

Pro-Tech® Modular Shoe System
6-Modular Frame Shoes
2-Sidewall Adapter Plates
4-Skid Shoes
Pre-packaged Hardware
Easy-to-Inventory Crate

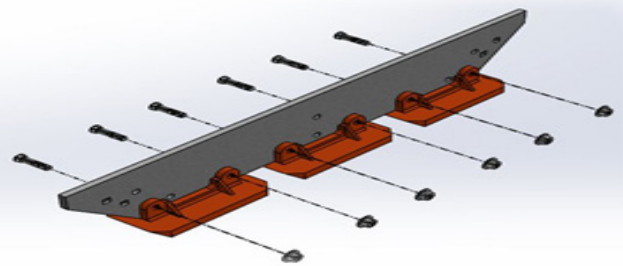


### IMPORTANT!

For torque recommendation, please refer to SAE J1701.  
Re-torque hardware after the first 10 plow hours. Both sides of the pusherbox should be free of rust, scale, dirt, etc. prior to installing new blades and hardware to reduce bolt loosening issues while in service.

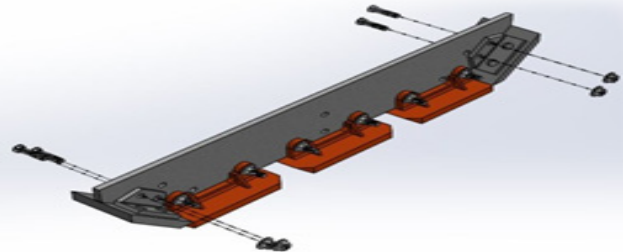
### STEP ONE

Using supplied dichromate coated hardware (part # KT-XT-S) insert plow bolts into countersunk side of sidewall adapter. Using the nuts and washers from the same kit, fasten the orange frame shoes hand tight to outside of sidewall adapter.



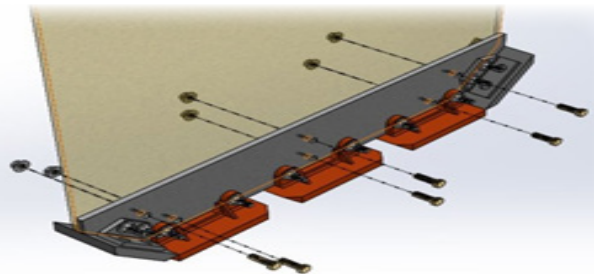
### STEP TWO

Using supplied dichromate coated plow bolt, lock nuts and two black skid shoes onto both 45 degree end of sidewall adapter. Skid shoes bolt on to outside of adapter plate. Leave hardware hand tight.



### STEP THREE

Using supplied hex head bolts and lock nuts (part# KT-XT-AP), secure completed adapter plate to pusherbox sidewall. Install silver flat washer against bolt head and through sidewall. Install conical washer and lock nut to complete assembly. Tighten fully.



### STEP FOUR

Set pusherbox on ground and ensure box is parallel to the surface it is sitting on. Then tighten all hardware. This ensures even wear on all shoes as well as ensuring the system is completely parallel to the ground.

